

# iTrans DB-TR-44

## Quick Guide

### 1. Product Introduction

The **iTrans DB-TR-44** is a signal conversion transmission panel that supports Dante audio (4x4) and Bluetooth (2X2), and analog audio (RCA or TRS).

It supports PoE power supply and wall mounting. The audio transmission and the power supply of the device are solved by single network cable, and the Bluetooth wireless and the analog audio interface are supported. The main application scenarios are telephone conferences, audio remote transmission and other applications.

### 2. Product Feature

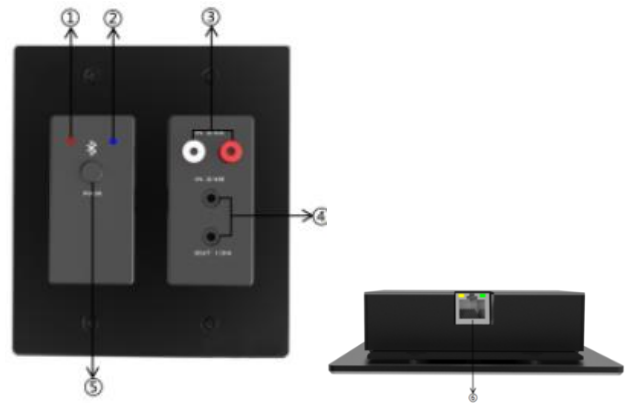
1. Simple pairing, display the Bluetooth connection status through the LED indicators.
2. High compatibility, it works with most smart phones, tablets, computers and other mobile devices.
3. RCA\*2 and 3.5mm TRS\*1 stereo inputs, choose one of them, TRS has priority.
4. 3.5mm TRS\*1 stereo output
5. BT 5.0 Bluetooth
6. DATNE 4X4
7. Integration of power supply and transmission, and PoE power supply and audio transmission through network cable
8. Bluetooth call bridge function for conference purpose

### 3. Technical Parameters

Model No.	iTrans DB-TR-44
Input Interface	Dante 4x Bluetooth 5.0, stereo RCA 2x 3.5 mm TRS 1x

Output interface	Dante 4x Bluetooth 5.0, stereo 3.5 mm TRS 1x
Frequency response	20Hz-20kHz
S/N	>100dB
Floor noise	-90dB
Power consumption	2W
THD	<0.005%
Operating temperature	-10°C ~ +40°C
Operating humidity	5~95%
Size (LxWxH)	123.5mm×109.1mm×30mm
Weight	310g

### 4. Product Overview



- ①: **Red indicator:** Power/Bluetooth disconnected
- ②: **Blue indicator:** Bluetooth connection is successful
- ③: **RCA stereo input interface**
- ④: **3.5mm TRS input interface /3.5mm TRS output interface**
- ⑤: **Bluetooth pairing button**
- ⑥: **RJ45 Network interface**

## 5. Operation

### 5.1: Power On:

After powering, the red and blue LED indicator on the panel will flash alternately for a short time, after successfully power on, it will turn into red light flashing.

If the LED indicator light is not on or always on, the equipment will fail. It is recommended to power off and restart the equipment firstly.

### 5.2: Pairing and Connect:

Press and hold the PAIR button for about 3s.

The LED red and blue indicators will start to flash alternately, indicating that the DB-TR-44 is now visible to other Bluetooth devices and accepts pairing. Then turn on other Bluetooth devices to search for devices and pair. When only the blue LED indicator flashes on the panel, it means that the paired connection is successful.

**(Notes:** The DB-TR-44 maintains the last 10 paired devices, any previously paired devices on this list will be allowed to reconnect within the device range without re-requesting pairing. The user only needs to select the corresponding Bluetooth name on the smart device.)

### 5.3: Routing configuration:

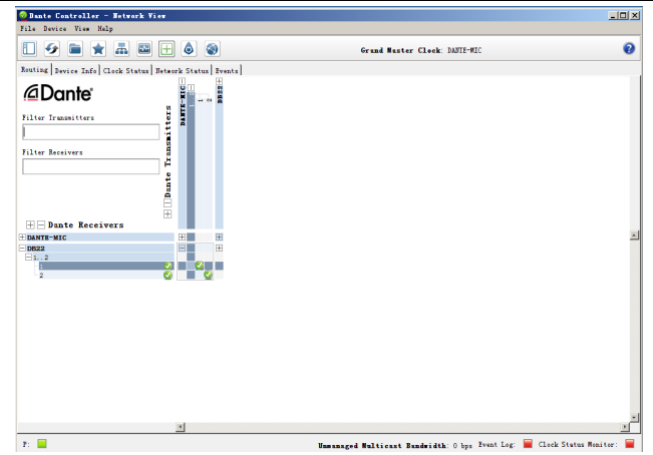
Audio routing configuration can use Dante Controller software or other compatible controllers to modify the input configuration.

Channels 1 and 2 route stereo Bluetooth audio directly to the Dante network.

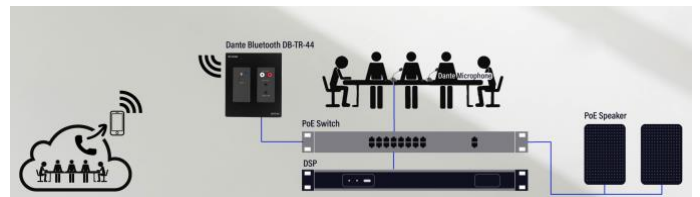
Channels 3 and 4 route the analog signal RCA input or 3.5 mm TRS input to the Dante network.

The digital signal input of Dante equipment can be converted to analog signal through Dante and output via 3.5mm TRS interface.

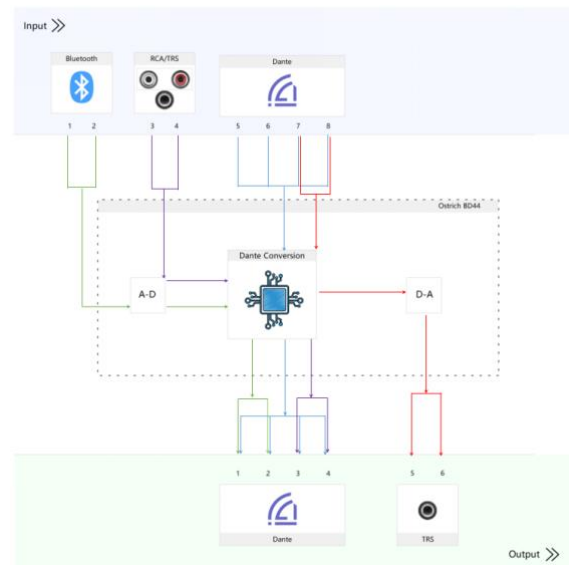
Download and install the Dante Controller from Audinate website ([www.audinate.com](http://www.audinate.com)).



### 5.4: Networking Figure



### 5.5: Signal Flow



## 6. Packing List

iTrans BD-TR-44	QC Card
1Set	1Pcs

## 7. Notes:

In order to ensure the reliable use of equipment and the safety of personnel, please follow below details when installing, using and maintaining:

1. When the equipment is installed, ensure that the ground wire in the power line is well grounded and the connection point of the chassis is well grounded.
2. Keep the working environment well ventilated, so that the heat generated by the equipment can be discharged in time, so as not to damage the equipment due to high temperature.
3. If the equipment is not used for a long time or in a wet condensation environment, the main power supply should be turned off.
4. Be sure to unplug the ac power cord of the equipment from the power supply socket before the following operations:
  - A. Remove or reload any part of the equipment.
  - B. Disconnect or reconnect any electrical plug or connection to the device.
5. Non-professionals without permission, do not dismantle the equipment without authorization, so as to avoid the risk of electric shock. Do not repair, so as not to increase the damage of the equipment.
6. Do not spill any corrosive chemicals or liquids on or near the equipment.

## Warranty Card:

Date of production:
Model No.: iTrans DB-TR-44
Serial No.: